

Coastal Bend Workforce Area

(Not Seasonally Adjusted Unemployment Rates by WDA, MSA, & County)

Area	Area Type	Latest Monthly Data November 2024						Previous Monthly Data October 2024				Year Ago November 2023			
		Labor Force	Employment	Unemployment	Rate	M+-	Y+-	Labor Force	Employment	Unemployment	Rate	Labor Force	Employment	Unemployment	Rate
United States	Nation	168,164,000	161,456,000	6,708,000	4.0	0.1	0.5	168,569,000	161,938,000	6,631,000	3.9	167,977,000	162,149,000	5,827,000	3.5
Texas	State	15,621,025	14,965,515	655,510	4.2	0.1	0.7	15,573,854	14,931,539	642,315	4.1	15,207,323	14,670,562	536,761	3.5
Corpus Christi	MSA	213,451	203,926	9,525	4.5	0.1	0.7	213,869	204,512	9,357	4.4	209,144	201,168	7,976	3.8
Coastal Bend	WDA	269,184	256,889	12,295	4.6	0.1	0.7	269,243	257,207	12,036	4.5	263,122	252,901	10,221	3.9
Aransas Pass	County	9,780	9,308	472	4.8	0.0	0.5	9,798	9,324	474	4.8	9,584	9,175	409	4.3
Bee	County	9,624	9,090	534	5.5	0.2	1.0	9,546	9,041	505	5.3	9,353	8,930	423	4.5
Brooks	County	2,268	2,137	131	5.8	0.1	1.0	2,253	2,124	129	5.7	2,261	2,153	108	4.8
Duval	County	5,152	4,913	239	4.6	-0.2	0.6	5,152	4,906	246	4.8	4,987	4,789	198	4.0
Jim Wells	County	16,418	15,556	862	5.3	0.2	0.8	16,359	15,530	829	5.1	15,767	15,051	716	4.5
Kenedy	County	128	119	9	7.0	-0.3	-0.1	123	114	9	7.3	127	118	9	7.1
Kleberg	County	13,630	12,991	639	4.7	0.2	0.7	13,474	12,866	608	4.5	13,334	12,805	529	4.0
Live Oak	County	5,253	5,043	210	4.0	-0.1	0.7	5,269	5,055	214	4.1	5,049	4,884	165	3.3
Nueces	County	173,128	165,588	7,540	4.4	0.1	0.7	173,495	166,094	7,401	4.3	169,617	163,313	6,304	3.7
Refugio	County	3,260	3,114	146	4.5	0.2	1.4	3,198	3,059	139	4.3	3,100	3,003	97	3.1
San Patricio	County	30,543	29,030	1,513	5.0	0.2	0.8	30,576	29,094	1,482	4.8	29,943	28,680	1,263	4.2

(M+-) Change in unemployment rate from last month (Increase) (Decrease)

(Y+-) Change in unemployment rate from last year (Increase) (Decrease)

- Earnings for all occupations Coastal Bend, expressed as hourly rate (TWC):

Coastal Bend	All Occupations-	Average \$19.53/hr.	Entry level \$12.10/hr.	Experienced workers \$32.22/hr.	Top 10% \$35.54/hr.
Texas	All Occupations-	Average \$22.10/hr.	Entry level \$13.37/hr.	Experienced workers \$37.48/hr.	Top 10% \$42.34/hr.

- Educational Attainment for population 25 years of age and older - Corpus Christi (Census American Fact Finder/American Community Survey):

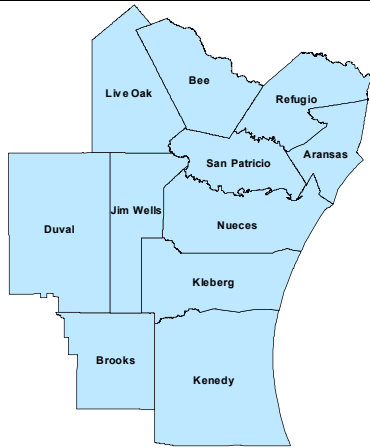
Less than 9th grade	7%	12th grade & GED	31%	Associates degree	8%	Graduate or Professional	7%
9th thru 11th grade	9%	Some College	24%	Bachelor's degree	14%		

- Median earnings Corpus Christi by education for persons 25 years of age & up (Census AFF/ACS): **\$27,211** (\$36,380 male/\$22,328 female)

Less than High School &	\$15,437	Some College or Associates	\$28,739	Graduate or Professional	\$56,681
High School &	\$26,818	Bachelor's	\$44,078		

Coastal Bend Workforce Development Area

November 2024



WDA Labor Force Statistics

	Nov-24	Oct-24	Nov-23	Yearly Change
Civilian Labor Force	269,184	268,990	263,122	6,062
Employed	256,889	256,978	252,901	3,988
Unemployed	12,295	12,012	10,221	2,074
Unemployment Rate	4.6%	4.5%	3.9%	0.7%

Texas Labor Force Statistics

	Nov-24	Oct-24	Nov-23	Yearly Change
Civilian Labor Force	15,621,025	15,573,579	15,207,323	413,702
Employed	14,965,515	14,931,450	14,670,562	294,953
Unemployed	655,510	642,129	536,761	118,749
Unemployment Rate	4.2%	4.1%	3.5%	0.7%

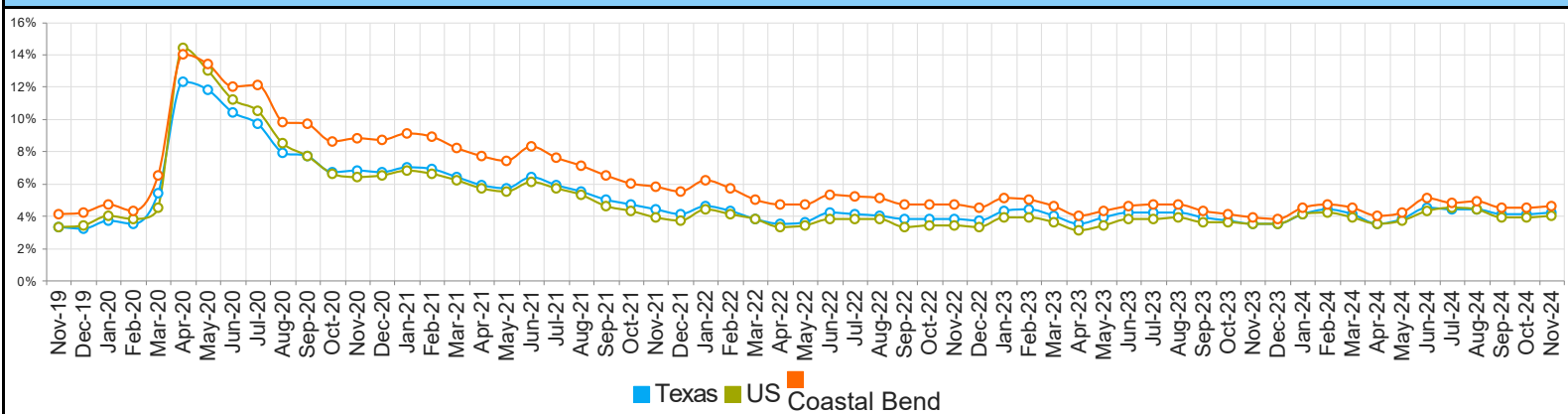
US Labor Force Statistics

	Nov-24	Oct-24	Nov-23	Yearly Change
Civilian Labor Force	168,164,000	168,569,000	167,977,000	187,000
Employed	161,456,000	161,938,000	162,149,000	-693,000
Unemployed	6,708,000	6,631,000	5,827,000	881,000
Unemployment Rate	4.0%	3.9%	3.5%	0.5%

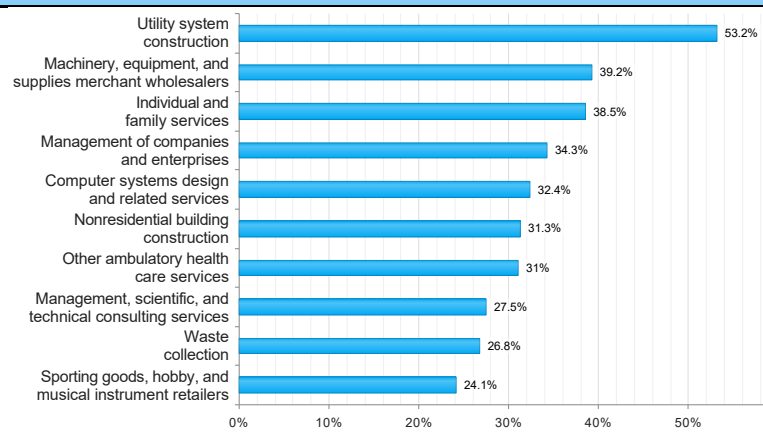
Continued Claims for the Week of the 12th

	Nov-24	Oct-24	Nov-23	Yearly Change
WDA	1,826	1,756	1,816	10
Texas	115,775	114,854	109,744	6,031

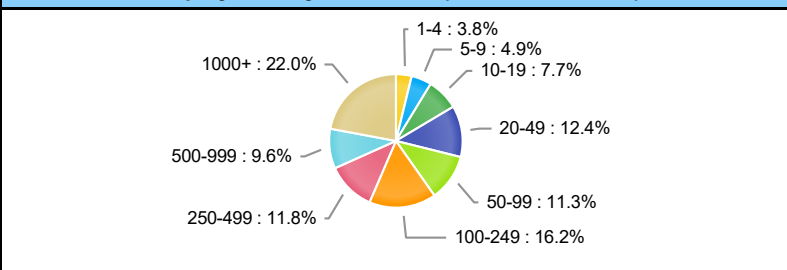
Historical Unemployment Rates



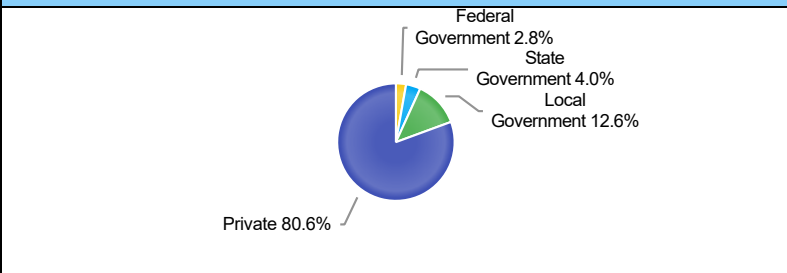
Projected Top Ten Fastest Growing Industries in WDA (% Growth 2022-2032)



Employment by Size Class (2nd Quarter 2024)



Employment by Ownership (2nd Quarter 2024)



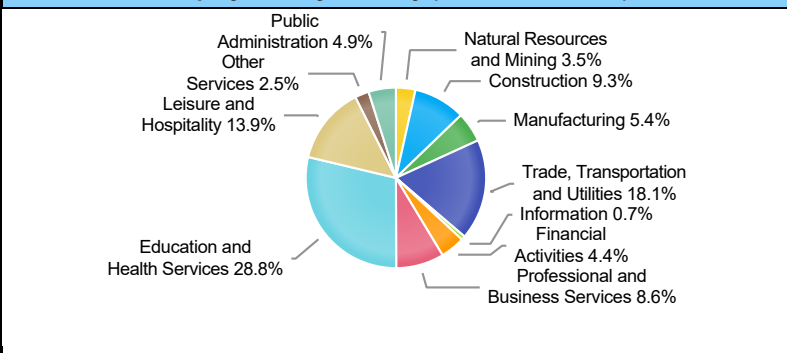
Average Weekly Wage (2nd Quarter 2024)

	Q2 2024	Q1 2024	Q2 2023	Quarterly Change	Yearly Change
WDA	\$1,083	\$1,145	\$1,036	-\$62	\$47
Texas	\$1,381	\$1,540	\$1,321	-\$159	\$60
US	\$1,390	\$1,527	\$1,332	-\$137	\$58

Employment by Industry (2nd Quarter 2024, Percent Change)

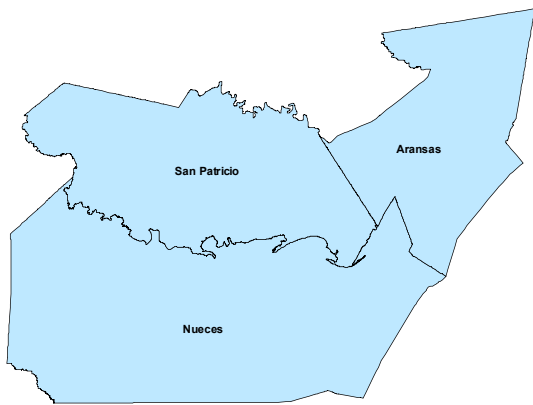
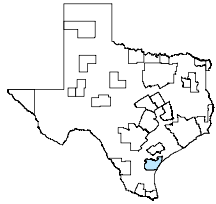
Industry	Employment	% of Total	% Quarterly Change	% Yearly Change
Natural Resources and Mining	8,207	3.5%	1.5%	-1.2%
Construction	22,124	9.3%	-6.3%	-2.4%
Manufacturing	12,904	5.4%	-2.1%	1.1%
Trade, Transportation and Utilities	42,905	18.1%	0.0%	1.0%
Information	1,600	0.7%	0.5%	-2.0%
Financial Activities	10,560	4.4%	4.9%	2.0%
Professional and Business Services	20,350	8.6%	-0.9%	-6.9%
Education and Health Services	68,315	28.8%	-0.1%	1.1%
Leisure and Hospitality	32,888	13.9%	5.4%	-1.3%
Other Services	5,971	2.5%	-0.2%	-2.3%
Public Administration	11,532	4.9%	0.3%	-0.1%

Employment by Industry (2nd Quarter 2024)



Corpus Christi MSA

November 2024



MSA Labor Force Statistics

	Nov-24	Oct-24	Nov-23	Yearly Change
Civilian Labor Force	213,451	213,644	209,144	4,307
Employed	203,926	204,307	201,168	2,758
Unemployed	9,525	9,337	7,976	1,549
Unemployment Rate	4.5%	4.4%	3.8%	0.7%

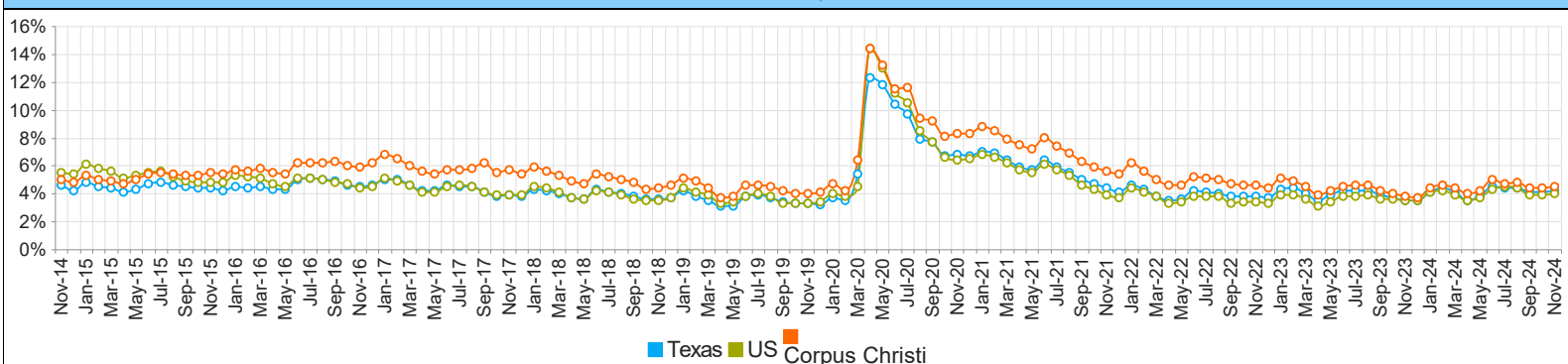
Texas Labor Force Statistics

	Nov-24	Oct-24	Nov-23	Yearly Change
Civilian Labor Force	15,621,025	15,573,579	15,207,323	413,702
Employed	14,965,515	14,931,450	14,670,562	294,953
Unemployed	655,510	642,129	536,761	118,749
Unemployment Rate	4.2%	4.1%	3.5%	0.7%

US Labor Force Statistics

	Nov-24	Oct-24	Nov-23	Yearly Change
Civilian Labor Force	168,164,000	168,569,000	167,977,000	187,000
Employed	161,456,000	161,938,000	162,149,000	-693,000
Unemployed	6,708,000	6,631,000	5,827,000	881,000
Unemployment Rate	4.0%	3.9%	3.5%	0.5%

Historical Unemployment Rates



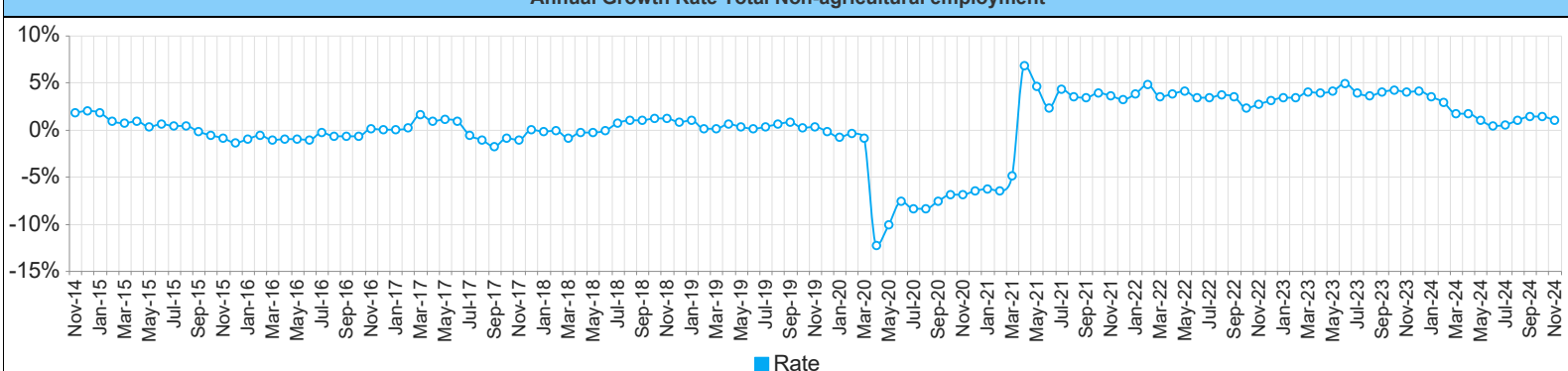
Employment by Size Class (2nd Quarter 2024)

Wages by Industry (in millions) (2nd Quarter 2024)

QCEW Employment by Size Class data for MSA profiles will be available here in the first quarter of 2025. Current data and chart can be found in the QCEW tab of Popular Downloads at <https://texaslmi.com/Home/PopularDownloads>.

QCEW Wages by Industry data for MSA profiles will be available here in the first quarter of 2025. Current data and chart can be found in the QCEW tab of Popular Downloads at <https://texaslmi.com/Home/PopularDownloads> or the QCEW section of LMI by Category at <https://texaslmi.com/LMIbyCategory/QCEW>

Annual Growth Rate Total Non-agricultural employment



Employment by Industry (November 2024)

Employment by Industry (November 2024)

Industry	Current Month Employment	% Monthly Change	% Yearly Change
Total Nonfarm	203,000	0.0%	1.0%
Mining, Logging and Construction	25,200	-0.4%	2.0%
Manufacturing	9,100	0.0%	0.0%
Trade, Transportation, and Utilities	34,500	0.9%	0.0%
Information	1,400	0.0%	0.0%
Financial Activities	9,800	0.0%	4.3%
Professional and Business Services	20,100	-1.5%	-2.0%
Private Education and Health Services	33,800	0.6%	2.4%
Leisure and Hospitality	27,000	-0.7%	0.0%
Other Services	6,600	0.0%	3.1%
Government	35,500	0.3%	1.4%

