

Coastal Bend Workforce Area

(Not Seasonally Adjusted Unemployment Rates by WDA, MSA, & County)

Area	Area Type	Latest Monthly Data October 2018						Previous Monthly Data September 2018				Year Ago October 2017			
		Labor Force	Employment	Unemployment	Rate	M+-	Y+-	Labor Force	Employment	Unemployment	Rate	Labor Force	Employment	Unemployment	Rate
United States	Nation	162,637,000	156,562,000	6,075,000	3.7	0.0	-0.4	161,926,000	155,962,000	5,964,000	3.7	160,371,000	153,846,000	6,524,000	4.1
Texas	State	13,833,511	13,316,780	516,731	3.7	-0.1	-0.2	13,816,273	13,290,804	525,469	3.8	13,592,091	13,057,389	534,702	3.9
Corpus Christi	MSA	207,372	198,524	8,848	4.3	-0.5	-1.2	205,634	195,751	9,883	4.8	205,665	194,331	11,334	5.5
Coastal Bend	WDA	263,400	252,033	11,367	4.3	-0.5	-1.2	261,032	248,408	12,624	4.8	261,157	246,773	14,384	5.5
Aransas	County	10,225	9,749	476	4.7	-0.5	-4.0	10,157	9,632	525	5.2	10,468	9,561	907	8.7
Bee	County	9,804	9,346	458	4.7	-0.2	-1.1	9,744	9,267	477	4.9	9,752	9,188	564	5.8
Brooks	County	2,435	2,300	135	5.5	-0.5	-0.8	2,463	2,314	149	6.0	2,384	2,234	150	6.3
Duval	County	4,904	4,664	240	4.9	-0.8	-0.9	4,902	4,625	277	5.7	4,763	4,486	277	5.8
Jim Wells	County	16,616	15,829	787	4.7	-0.6	-1.3	16,318	15,458	860	5.3	16,552	15,561	991	6.0
Kenedy	County	258	250	8	3.1	-0.1	0.8	277	268	9	3.2	259	253	6	2.3
Kleberg	County	13,381	12,783	598	4.5	-0.4	-0.3	13,129	12,482	647	4.9	13,314	12,674	640	4.8
Live Oak	County	5,527	5,358	169	3.1	-0.4	-1.0	5,458	5,269	189	3.5	5,424	5,201	223	4.1
Nueces	County	166,980	160,173	6,807	4.1	-0.5	-0.9	165,481	157,908	7,573	4.6	164,930	156,757	8,173	5.0
Refugio	County	3,103	2,979	124	4.0	-0.3	-2.5	3,107	2,974	133	4.3	3,044	2,845	199	6.5
San Patricio	County	30,167	28,602	1,565	5.2	-0.8	-2.2	29,996	28,211	1,785	6.0	30,267	28,013	2,254	7.4

(M+-) Change in unemployment rate from last month (Increase) (Decrease)

(Y+-) Change in unemployment rate from last year (Increase) (Decrease)

- Earnings for all occupations Coastal Bend, expressed as hourly rate (TWC):

Coastal Bend	All Occupations-	Average \$18.35/hr.	Entry level \$8.58/hr.	Experienced workers \$23.24/hr.	Top 10% \$33.56/hr.
Texas	All Occupations-	Average \$20.97/hr.	Entry level \$8.88/hr.	Experienced workers \$ 27.02/hr.	Top 10% \$39.64/hr.

- Educational Attainment for population 25 years of age and older - Corpus Christi (Census American Fact Finder/American Community Survey):

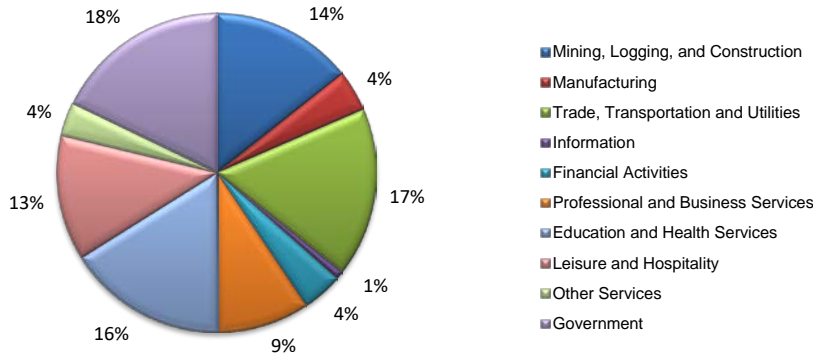
Less than 9th grade	8.7%	12th grade & GED	27.7%	Associates degree	7.0%	Graduate or Professional degrees	8.4%
9th thru 11th grade	9.3%	Some College	25.1%	Bachelors degree	13.8%		

- Median earnings Corpus Christi by education for persons 25 years of age & up (Census AFF/ACS): **\$27,211** (\$36,380 male/ \$22,328 female)

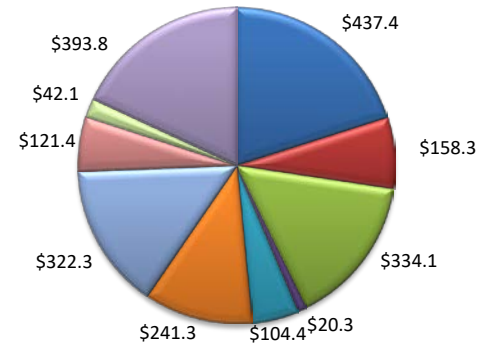
Less than High School	\$15,437	Some College or Associates	\$28,739	Graduate or Professional	\$56,681
High School & GED	\$26,818	Bachelor's	\$44,078		

(Aransas, Nueces, San Patricio)

Industry Composition



Wages by Industry (in millions)
2nd Quarter 2018



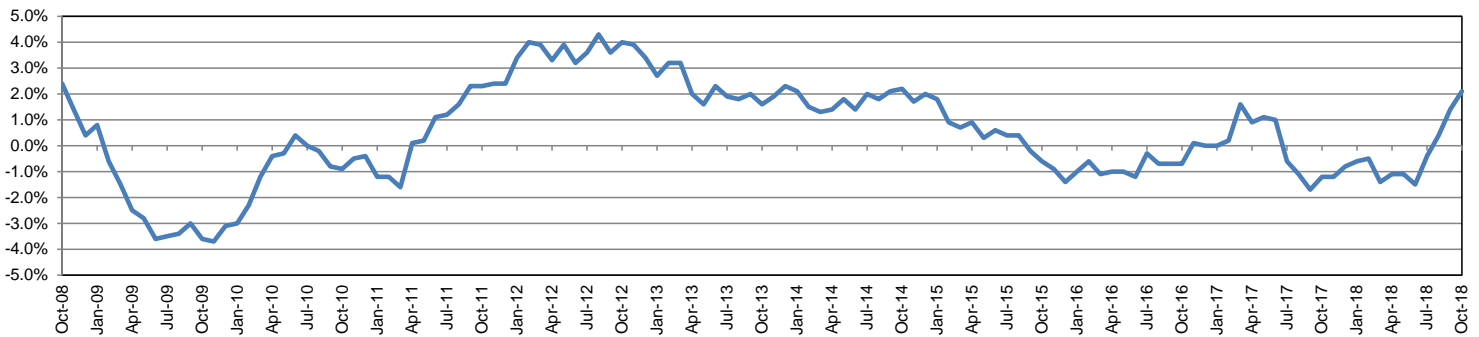
Employment by Industry

				Monthly Change		Annual Change	
	Oct-18	Sep-18	Oct-17	Actual	%	Actual	%
Total Nonfarm	194,900	192,000	190,800	2,900	1.5%	4,100	2.1%
Mining, Logging and Construction	28,000	27,300	26,200	700	2.6%	1,800	6.9%
Manufacturing	8,100	8,100	8,300	0	0.0%	-200	-2.4%
Trade, Transportation, and Utilities	33,300	33,100	33,100	200	0.6%	200	0.6%
Information	1,700	1,700	1,800	0	0.0%	-100	-5.6%
Financial Activities	8,000	7,900	7,700	100	1.3%	300	3.9%
Professional and Business Services	18,100	17,400	17,500	700	4.0%	600	3.4%
Education and Health Services	31,600	31,500	31,000	100	0.3%	600	1.9%
Leisure and Hospitality	24,700	24,800	23,800	-100	-0.4%	900	3.8%
Other Services	6,600	6,600	6,500	0	0.0%	100	1.5%
Government	34,800	33,600	34,900	1,200	3.6%	-100	-0.3%

Industry Size Class

Size Class	Employees per firm	Number of Firms	June 2018	
			Employment in Size Class	% Total Employment
9	1000+	21	48,255	25.5%
8	500-999	21	13,639	7.2%
7	250-499	52	17,828	9.4%
6	100-249	218	32,198	17.0%
5	50-99	282	19,533	10.3%
4	20-49	844	25,831	13.7%
3	10-19	1,084	14,787	7.8%
2	5-9	1,489	9,867	5.2%
1	1-4	3,529	7,263	3.8%
0	0	703	0	0.0%
Total		8,243	189,201	100.0%

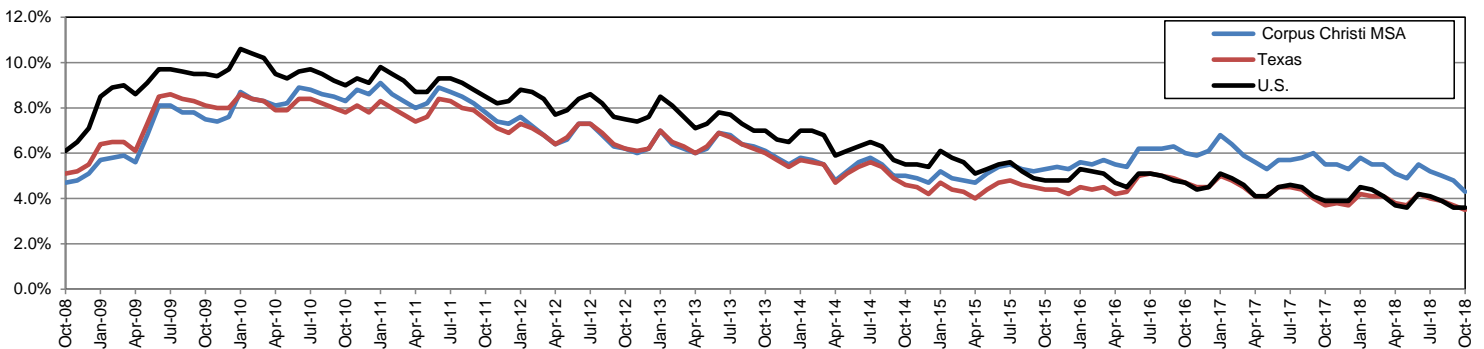
Annual Growth Rate for Total Nonagricultural Employment



Unemployment Information (all estimates in thousands)

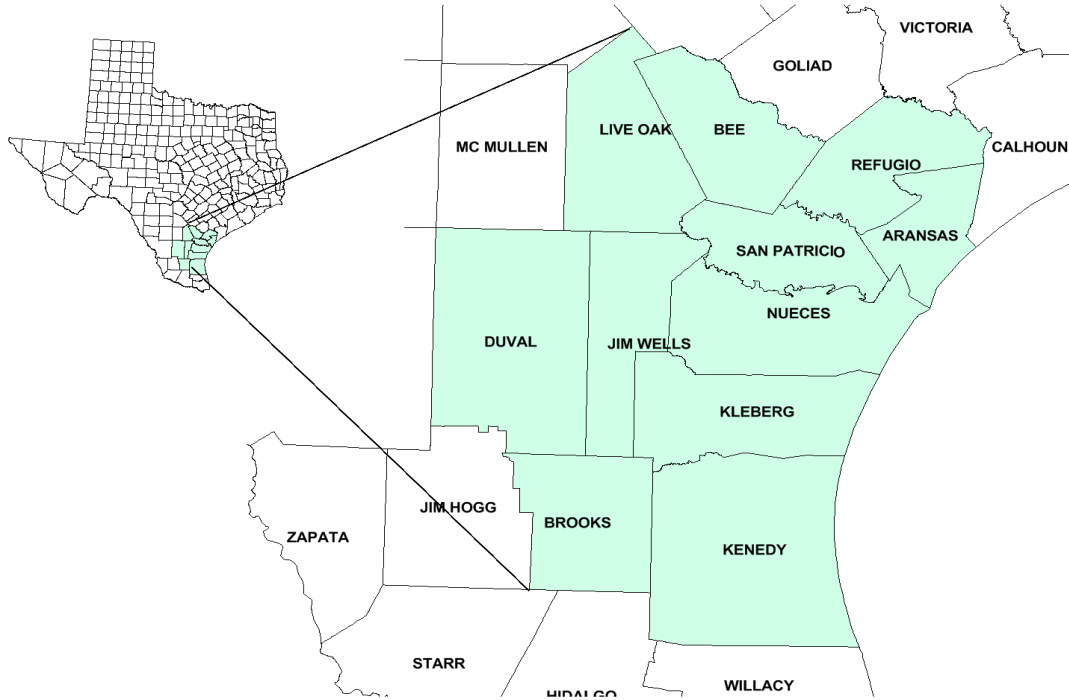
	Corpus Christi MSA				Texas (Actual)				United States (Actual)			
	C.L.F.	Emp.	Unemp.	Rate	C.L.F.	Emp.	Unemp.	Rate	C.L.F.	Emp.	Unemp.	Rate
Oct-18	207.4	198.5	8.8	4.3	13,869.5	13,390.6	478.9	3.5	162,723.0	165,952.0	5,711.0	3.5
Sep-18	205.6	195.8	9.9	4.8	13,802.1	13,285.1	517.0	3.7	161,958.0	156,191.0	5,766.0	3.6
Oct-17	205.7	194.3	11.3	5.5	13,536.2	13,034.6	501.6	3.7	160,465.0	154,223.0	6,242.0	3.9

Historical Unemployment Rates



Coastal Bend Workforce Development Area

October 2018



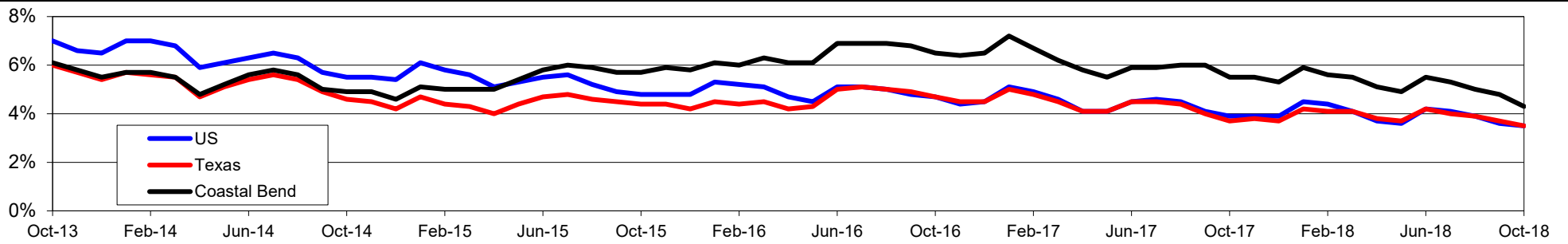
WDA Labor Force Statistics				
	Oct-18	Sep-18	Oct-17	OTY
CLF	263,400	261,032	261,157	2,243
Employed	252,033	248,408	246,773	5,260
Unemployed	11,367	12,624	14,384	-3,017
Rate	4.3%	4.8%	5.5%	-1.2%

Texas Labor Force Statistics				
	Oct-18	Sep-18	Oct-17	OTY
CLF	13,869,529	13,802,138	13,536,215	333,314
Employed	13,390,620	13,285,102	13,034,581	356,039
Unemployed	478,909	517,036	501,634	-22,725
Rate	3.5%	3.7%	3.7%	-0.2%

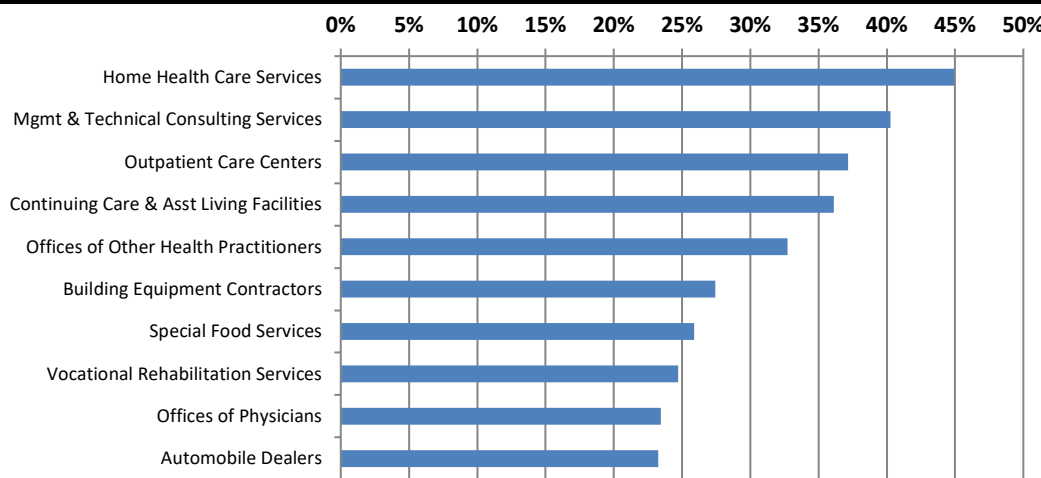
US Labor Force Statistics				
	Oct-18	Sep-18	Oct-17	OTY
CLF	162,723,000	161,958,000	160,465,000	2,258,000
Employed	156,952,000	156,191,000	154,223,000	2,729,000
Unemployed	5,771,000	5,766,000	6,242,000	-471,000
Rate	3.5%	3.6%	3.9%	-0.4%

Continued Claims for the Week of the 12th				
	Oct-18	Sep-18	Oct-17	OTY
WDA	1,786	2,096	3,914	-2,128
Texas	79,605	85,803	105,966	-26,361

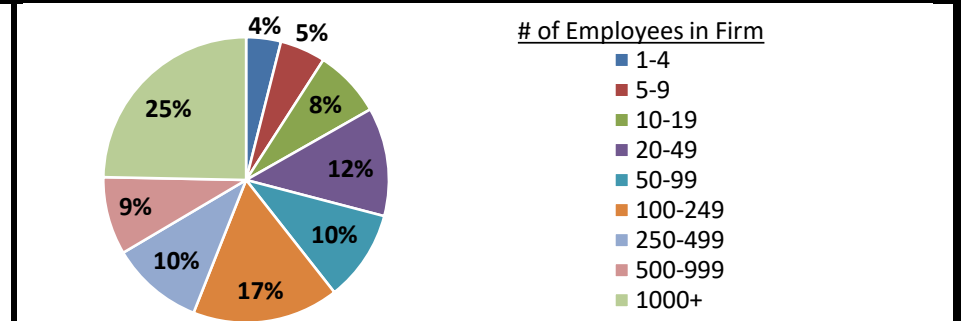
Historical Unemployment Rates



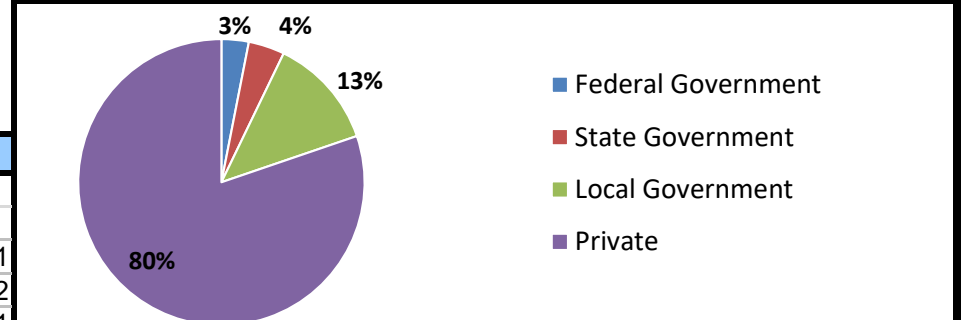
Projected Fastest Growing Industries in WDA (% growth 2014-2024)



Employment by Size Class (1st Quarter 2018)



Employment by Ownership (1st Quarter 2018)



Average Weekly Wage (1st Quarter 2018)

	Q1 2018	Q4 2017	Q1 2017	Change	
				Quarter	Year
WDA	\$900	\$908	\$879	-\$7	\$21
Texas	\$1,167	\$1,109	\$1,124	\$58	\$42
US	\$1,152	\$1,109	\$1,111	\$43	\$41

Employment by Industry (1st Quarter 2018, Percent Change)

Industry	Employment	% of total	% Change	
			Quarter	Year
Natural resources and mining	10,499	4.5%	-4.6%	7.2%
Construction	24,452	10.4%	-1.7%	-0.9%
Manufacturing	12,332	5.2%	0.0%	-1.5%
Trade, transportation and utilities	42,589	18.1%	-2.4%	-0.5%
Information	1,976	0.8%	-5.6%	-7.6%
Financial activities	9,672	4.1%	2.4%	4.5%
Professional and business services	20,097	8.5%	3.1%	9.2%
Education and health services	66,040	28.1%	1.0%	-1.0%
Leisure and hospitality	30,126	12.8%	0.6%	-1.8%
Other services	5,749	2.4%	-0.1%	-4.3%
Public administration	11,819	5.0%	-0.7%	-1.6%
Total	235,351	100.0%	-0.2%	0.2%

Employment by Industry (1st Quarter 2018)

