

# Coastal Bend Workforce Area

(Not Seasonally Adjusted Unemployment Rates by WDA, MSA, & County)

Area	Area Type	Latest Monthly Data June 2017						Previous Monthly Data May 2017				Year Ago June 2016			
		Labor Force	Employment	Unemployment	Rate	M+-	Y+-	Labor Force	Employment	Unemployment	Rate	Labor Force	Employment	Unemployment	Rate
United States	Nation	160,145,000	153,168,000	6,977,000	4.4	0.1	-0.5	159,784,000	152,923,000	6,861,000	4.3	158,889,000	151,090,000	7,799,000	4.9
Texas	State	13,469,462	12,848,980	620,482	4.6	-0.2	-0.1	13,526,788	12,870,796	655,992	4.8	13,249,037	12,628,206	620,831	4.7
Corpus Christi	MSA	209,570	197,129	12,441	5.9	0.2	-0.4	209,316	197,358	11,958	5.7	206,669	193,651	13,018	6.3
Coastal Bend	WDA	263,819	247,345	16,474	6.2	0.2	-0.8	264,185	248,351	15,834	6.0	264,398	245,762	18,636	7.0
Aransas	County	10,213	9,628	585	5.7	0.0	-0.1	10,218	9,638	580	5.7	10,081	9,501	580	5.8
Bee	County	9,944	9,263	681	6.8	0.0	-1.9	10,087	9,404	683	6.8	10,391	9,487	904	8.7
Brooks	County	2,269	2,040	229	10.1	1.2	-3.5	2,271	2,070	201	8.9	2,438	2,106	332	13.6
Duval	County	4,577	4,177	400	8.7	-0.1	-3.5	4,615	4,210	405	8.8	4,892	4,294	598	12.2
Jim Wells	County	15,934	14,587	1,347	8.5	0.3	-3.6	16,007	14,696	1,311	8.2	17,408	15,304	2,104	12.1
Kenedy	County	211	204	7	3.3	-0.4	-2.5	216	208	8	3.7	226	213	13	5.8
Kleberg	County	13,426	12,508	918	6.8	0.7	-1.0	13,763	12,927	836	6.1	14,012	12,926	1,086	7.8
Live Oak	County	4,834	4,559	275	5.7	0.2	-1.0	4,843	4,575	268	5.5	5,207	4,859	348	6.7
Nueces	County	168,559	159,059	9,500	5.6	0.2	-0.4	168,275	159,202	9,073	5.4	166,194	156,187	10,007	6.0
Refugio	County	3,054	2,878	176	5.8	0.5	-1.6	3,067	2,903	164	5.3	3,155	2,922	233	7.4
San Patricio	County	30,798	28,442	2,356	7.6	0.1	-0.4	30,823	28,518	2,305	7.5	30,394	27,963	2,431	8.0

(M+-) Change in unemployment rate from last month (Increase) (Decrease)

(Y+-) Change in unemployment rate from last year (Increase) (Decrease)

- Earnings for all occupations Coastal Bend, expressed as hourly rate (TWC):

<b>Coastal Bend</b>	<b>All Occupations-</b>	<b>Average \$18.35/hr.</b>	<b>Entry level \$8.58/hr.</b>	<b>Experienced workers \$23.24/hr.</b>	<b>Top 10% \$33.56/hr.</b>
<b>Texas</b>	<b>All Occupations-</b>	<b>Average \$20.97/hr.</b>	<b>Entry level \$8.88/hr.</b>	<b>Experienced workers \$ 27.02/hr.</b>	<b>Top 10% \$39.64/hr.</b>

- Educational Attainment for population 25 years of age and older - Corpus Christi (Census American Fact Finder/American Community Survey):

<b>Less than 9<sup>th</sup> grade</b>	<b>8.7%</b>	<b>12<sup>th</sup> grade &amp; GED</b>	<b>27.7%</b>	<b>Associates degree</b>	<b>7.0%</b>	<b>Graduate or Professional degrees</b>	<b>8.4%</b>
<b>9<sup>th</sup> thru 11<sup>th</sup> grade</b>	<b>9.3%</b>	<b>Some College</b>	<b>25.1%</b>	<b>Bachelors degree</b>	<b>13.8%</b>		

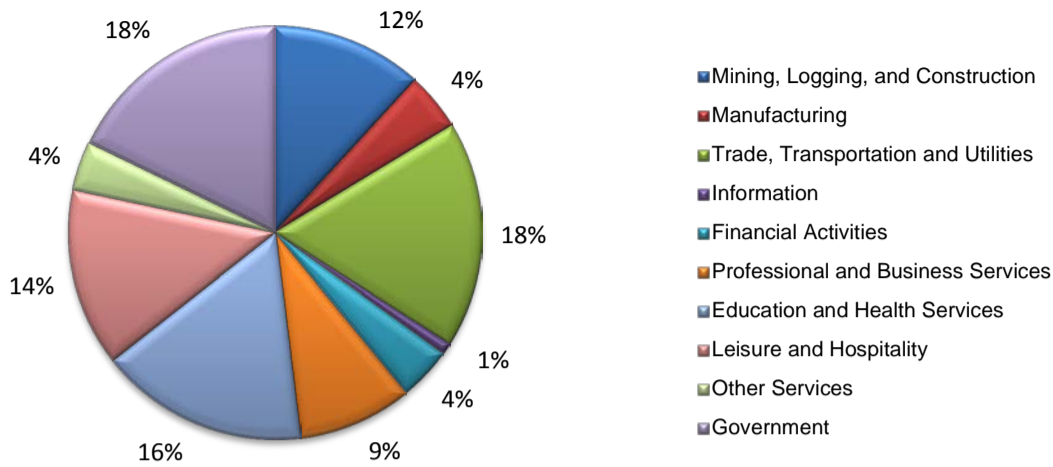
- Median earnings Corpus Christi by education for persons 25 years of age & up (Census AFF/ACS): **\$27,211** (\$36,380 male/ \$22,328 female)

<b>Less than High School</b>	<b>\$15,437</b>	<b>Some College or Associates</b>	<b>\$28,739</b>	<b>Graduate or Professional</b>	<b>\$56,681</b>
<b>High School &amp; GED</b>	<b>\$26,818</b>	<b>Bachelor's</b>	<b>\$44,078</b>		

**Equal Opportunity Employer/Program.** Auxiliary aids and services are available upon request to individuals with disabilities.  
Deaf, hard-of-hearing or speech impaired customers may contact **Relay Texas:** 1-800-735-2989 (TDD) and 1-800-735-2988 or 7-1-1 (Voice)

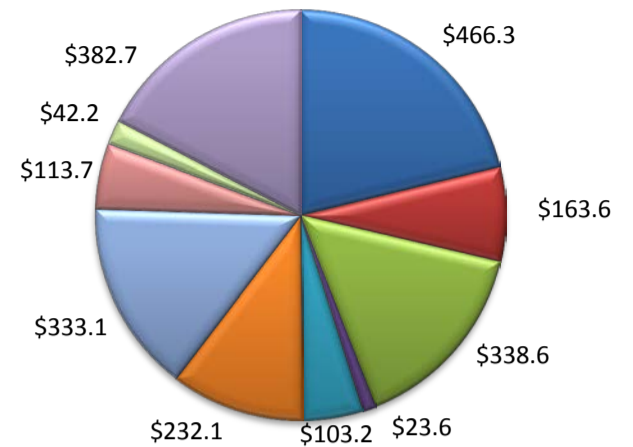
(Aransas, Nueces, San Patricio)

Industry Composition



Wages by Industry (in millions)

4th Quarter 2016



Employment by Industry

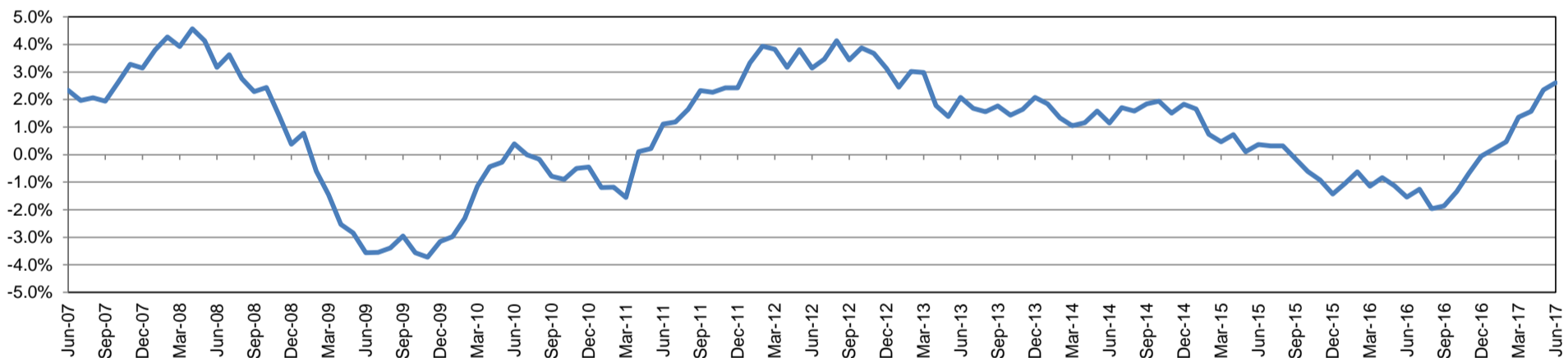
	Jun-17	May-17	Jun-16	Monthly Change		Annual Change	
				Actual	%	Actual	%
Total Nonfarm	196,200	195,800	191,200	400	0.2%	5,000	2.6%
Mining, Logging, and Construction	23,100	23,100	22,200	0	0.0%	900	4.1%
Manufacturing	8,900	8,900	8,800	0	0.0%	100	1.1%
Trade, Transportation, and Utilities	34,800	34,700	34,200	100	0.3%	600	1.8%
Information	1,800	1,800	1,900	0	0.0%	-100	-5.3%
Financial Activities	8,100	7,800	7,700	300	3.9%	400	5.2%
Professional and Business Services	17,600	17,300	16,500	300	1.7%	1,100	6.7%
Education and Health Services	32,000	32,000	30,900	0	0.0%	1,100	3.6%
Leisure and Hospitality	27,400	27,000	27,200	400	1.5%	200	0.7%
Other Services	7,500	7,400	7,500	100	1.4%	0	0.0%
Government	35,000	35,800	34,300	-800	-2.2%	700	2.0%

Industry Size Class

December 2016

Size Class	Employees per firm	Number of Firms	Employment in Size Class	% Total Employment
9	1000+	20	47,935	25.4%
8	500-999	20	13,912	7.4%
7	250-499	49	16,846	8.9%
6	100-249	210	31,779	16.9%
5	50-99	306	21,256	11.3%
4	20-49	817	24,873	13.2%
3	10-19	1,089	14,753	7.8%
2	5-9	1,506	9,886	5.2%
1	1-4	3,592	7,284	3.9%
0	0	652	0	0.0%
Total		8,261	188,524	100.0%

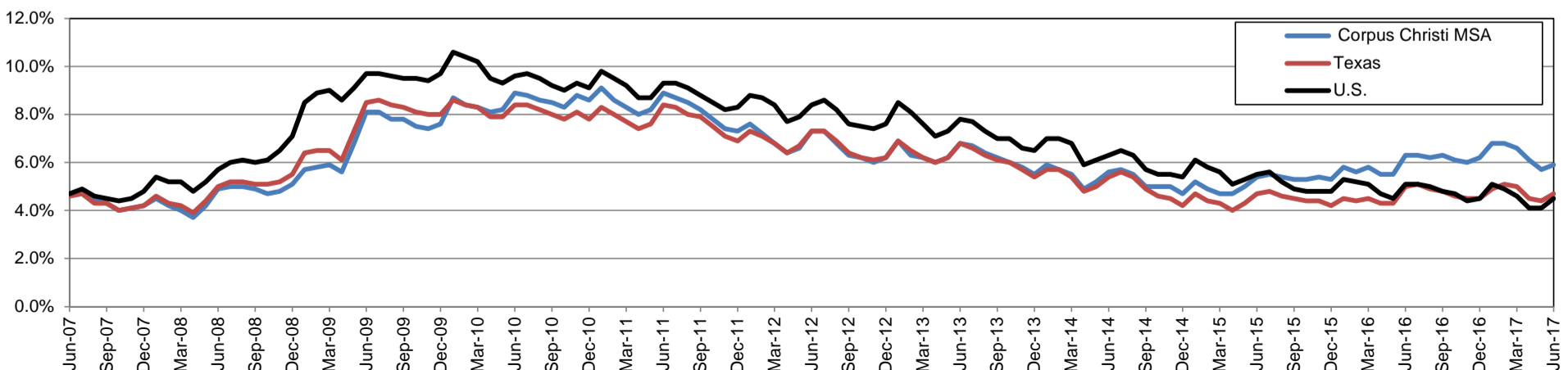
Annual Growth Rate for Total Nonagricultural Employment



Unemployment Information (all estimates in thousands)

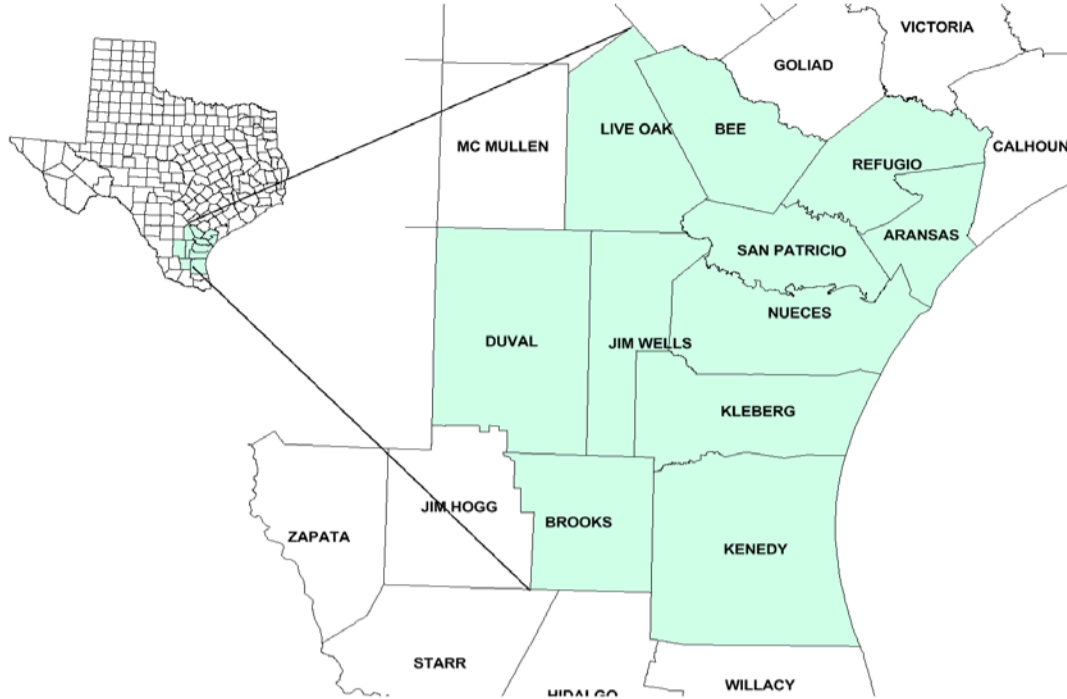
	Corpus Christi MSA				Texas (Actual)				United States (Actual)			
	C.L.F.	Emp.	Unemp.	Rate	C.L.F.	Emp.	Unemp.	Rate	C.L.F.	Emp.	Unemp.	Rate
Jun-17	209.6	197.1	12.4	5.9	13,464.3	12,833.3	631.1	4.7	161,337.0	154,086.0	7,250.0	4.5
May-17	209.3	197.4	12.0	5.7	13,450.0	12,858.0	592.0	4.4	159,979.0	153,407.0	6,572.0	4.1
Jun-16	206.7	193.7	13.0	6.3	13,319.7	12,656.7	662.9	5.0	160,135.0	151,990.0	8,144.0	5.1

Historical Unemployment Rates



# Coastal Bend Workforce Development Area

June 2017



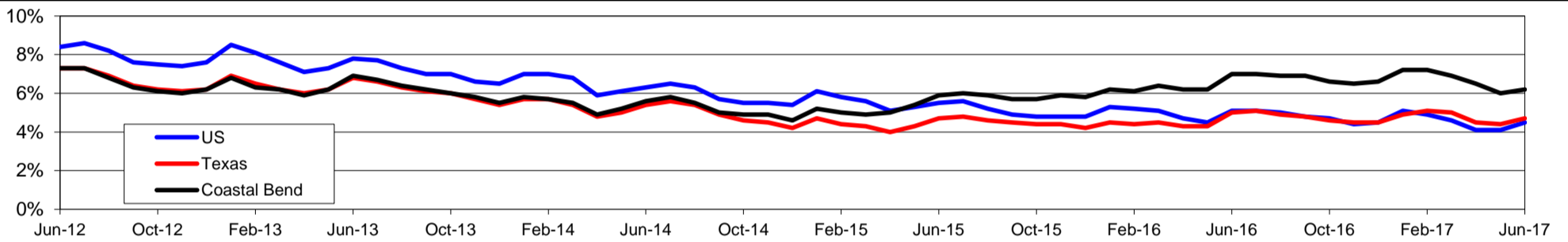
WDA Labor Force Statistics				
	Jun-17	May-17	Jun-16	OTY
CLF	263,819	264,185	264,398	-579
Employed	247,345	248,351	245,762	1,583
Unemployed	16,474	15,834	18,636	-2,162
Rate	6.2%	6.0%	7.0%	-0.8%

Texas Labor Force Statistics				
	Jun-17	May-17	Jun-16	OTY
CLF	13,464,322	13,450,012	13,319,665	144,657
Employed	12,833,254	12,858,020	12,656,717	176,537
Unemployed	631,068	591,992	662,948	-31,880
Rate	4.7%	4.4%	5.0%	-0.3%

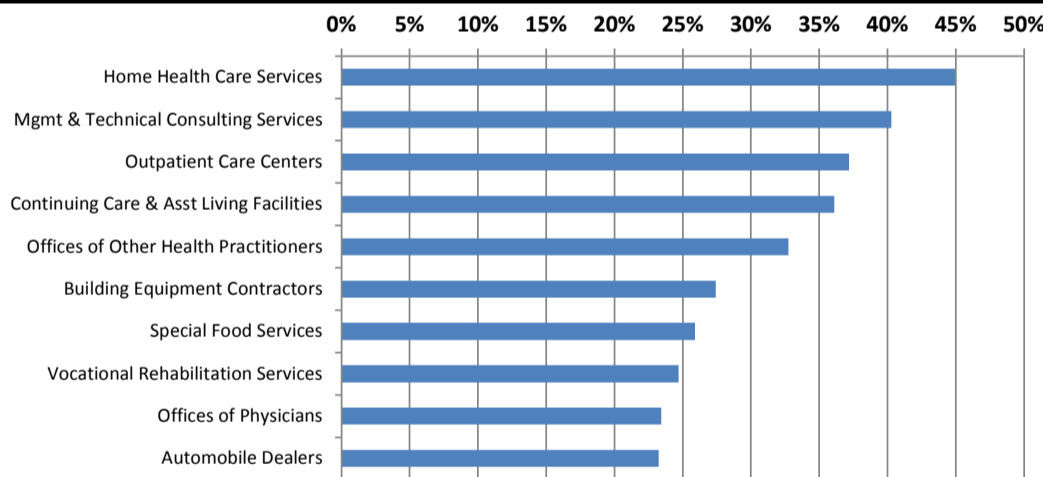
US Labor Force Statistics				
	Jun-17	May-17	Jun-16	OTY
CLF	161,337,000	159,979,000	160,135,000	1,202,000
Employed	154,086,000	153,407,000	151,990,000	2,096,000
Unemployed	7,250,000	6,572,000	8,144,000	-894,000
Rate	4.5%	4.1%	5.1%	-0.6%

Continued Claims for the Week of the 12th				
	Jun-17	May-17	Jun-16	OTY
WDA	3,240	3,109	5,317	-2,077
Texas	123,045	113,603	157,420	-34,375

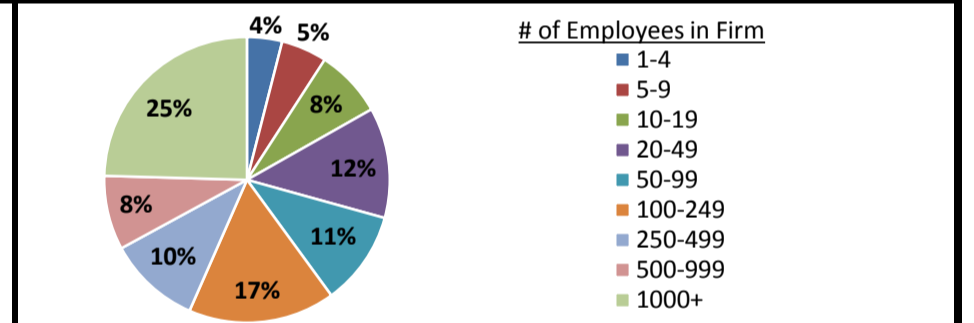
## Historical Unemployment Rates



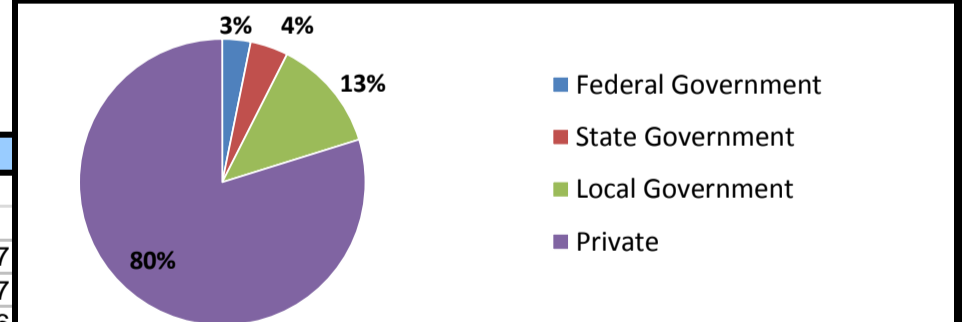
## Projected Fastest Growing Industries in WDA (% growth 2014-2024)



## Employment by Size Class (4th Quarter 2016)



## Employment by Ownership (4th Quarter 2016)



## Average Weekly Wage (4th Quarter 2016)

	Q4 2016	Q3 2016	Q4 2015	Change	
				Quarter	Year
WDA	\$869	\$861	\$896	\$8	-\$27
Texas	\$1,072	\$1,042	\$1,099	\$31	-\$27
US	\$1,067	\$1,027	\$1,083	\$40	-\$16

## Employment by Industry (4th Quarter 2016, Percent Change)

Industry	Employment	% of total	% Change	
			Quarter	Year
Natural resources and mining	9,535	4.0%	1.3%	-25.2%
Construction	25,042	10.5%	2.3%	22.4%
Manufacturing	12,626	5.3%	-2.6%	-10.1%
Trade, transportation and utilities	44,227	18.6%	0.6%	-4.6%
Information	2,138	0.9%	-2.8%	-12.7%
Financial activities	9,287	3.9%	-0.9%	-10.7%
Professional and business services	18,209	7.7%	0.1%	-4.3%
Education and health services	67,395	28.4%	5.4%	2.7%
Leisure and hospitality	30,623	12.9%	-5.8%	-2.0%
Other services	6,237	2.6%	-3.8%	-8.5%
Public administration	12,223	5.1%	1.5%	3.0%
<b>Total</b>	<b>237,542</b>	<b>100.0%</b>	<b>0.8%</b>	<b>-1.5%</b>

## Employment by Industry (4th Quarter 2016)

